

Local Bicycle Pedestrian Coordinators: Essential to Health in All Policies



Poster presentation

2015 APHA conference

Ms. Kit Keller, JD, Executive Director

Association of Pedestrian and Bicycle Professionals

www.apbp.org

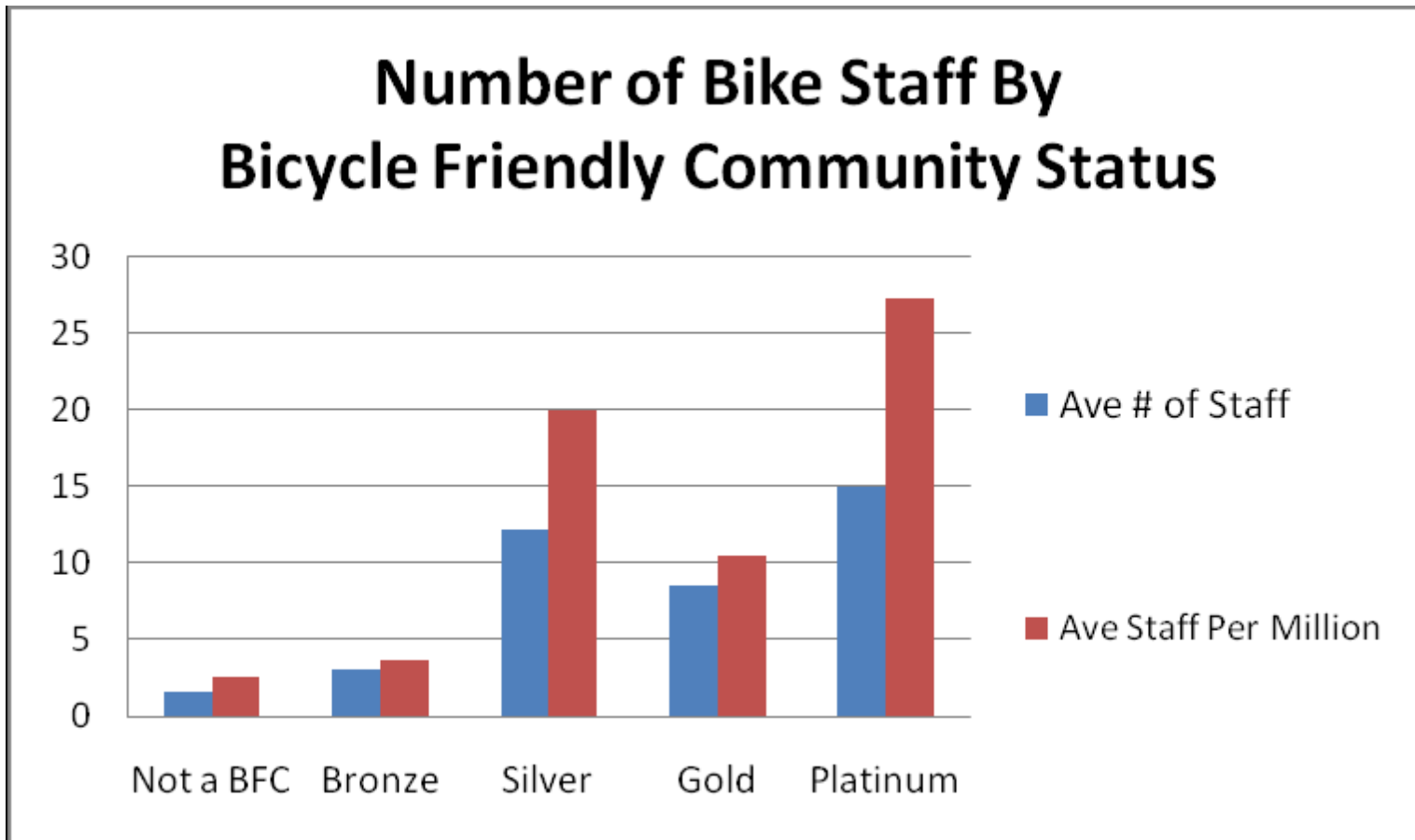
How do Local Bicycle Pedestrian Coordinators

Foster an Environment Friendly to Health in All Policies?

- Bridge silos of engineering, planning, landscape architecture, architecture, public health and law enforcement.
- Develop active transportation plan with engaged citizen input.
- Identify and pursue funding to implement a community's active transportation plan.
- Provide information, education and encouragement programs that enable people to choose modes of active transportation.
- Gather data about mode choice and regularly count users to assure continued funding for active transportation.

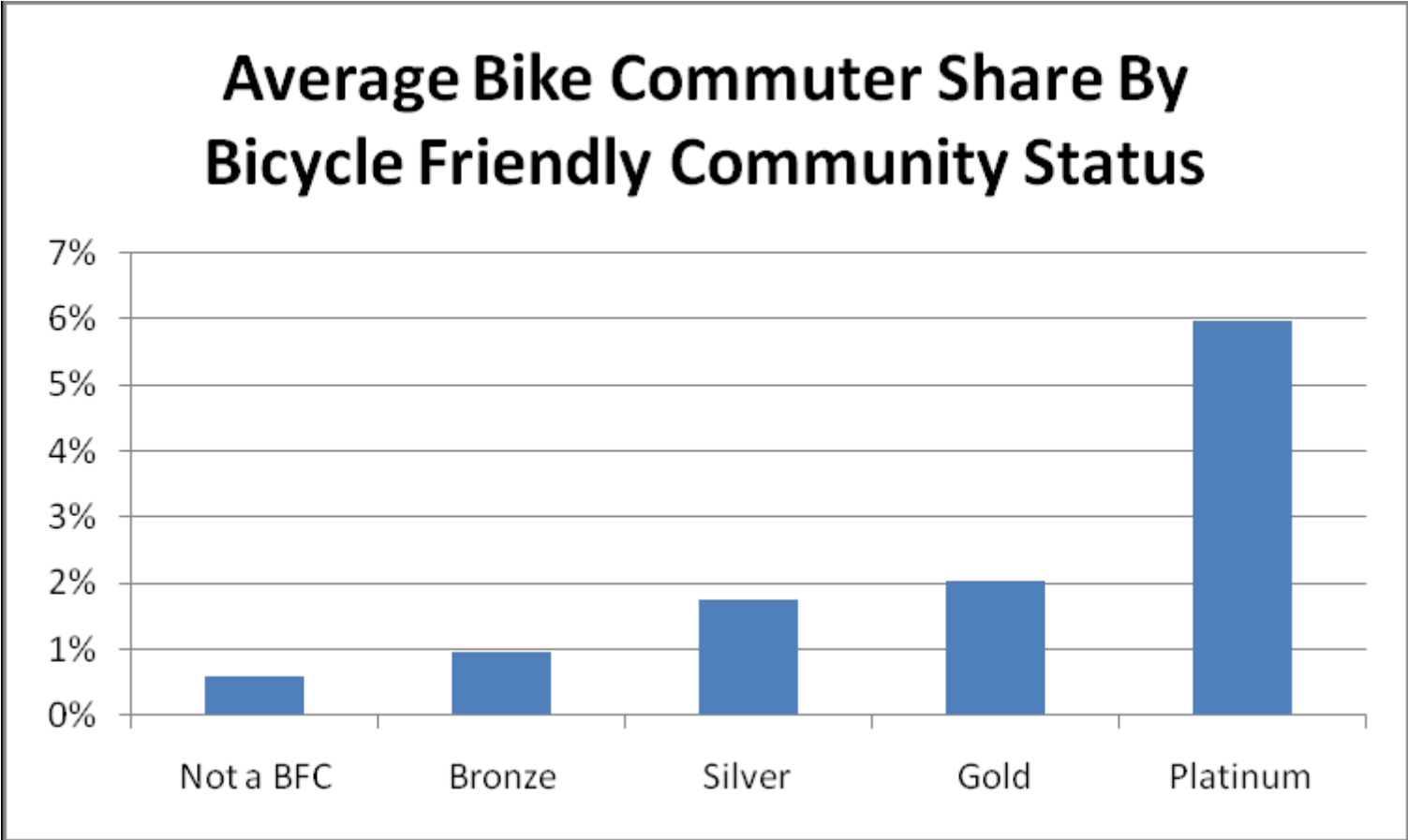
Bicycle Friendly Communities have high bicycle and pedestrian staff levels

Source: Advocacy Advance¹



¹ The Bicycle Friendly Community designation is a program of the League of American Bicyclists.

Source: Advocacy Advance²



² The Bicycle Friendly Community designation is a program of the League of American Bicyclists.

Seven Steps to Hiring and Training

Effective Local Bicycle Pedestrian Coordinators

1. Job description – well defined (APBP can help!)
2. Reach the best candidates – know where to advertise
3. Interview team – ensure they understand the job, goals
4. Baseline skill set – know what you really want
5. Initial training – mentorship, team-based training
6. Equity principles – emphasize this core knowledge
7. Continuing education – ensure cross-disciplinary understanding and team building through shared learning

Once hired, the Local Bicycle Pedestrian Coordinator should be tasked to collect data and apply performance measures.

Examples of Effective Active Transportation Programs Implemented by Local Bicycle Pedestrian Coordinators

- Bikeshare
- Counting programs (totem counters are popular)
- Bicycle parking (in-road bike corrals are trending)
- Vision Zero
- Bicycle Plan, Pedestrian Plan, Multi-modal Plan
- Protected bike lanes
- Bike racks on buses
- Safety education for all roadway users
- Safe Routes to School
- Accessibility improvements (curb ramps, accessible signals)

Resources for Local Coordinators

NACTO Urban Street Design Guide

NACTO Urban Bikeway Design Guide

ITE/CNU Design Walkable Urban Thoroughfares: A Context Sensitive Approach

Highway Capacity Manual (lane width; level of service)

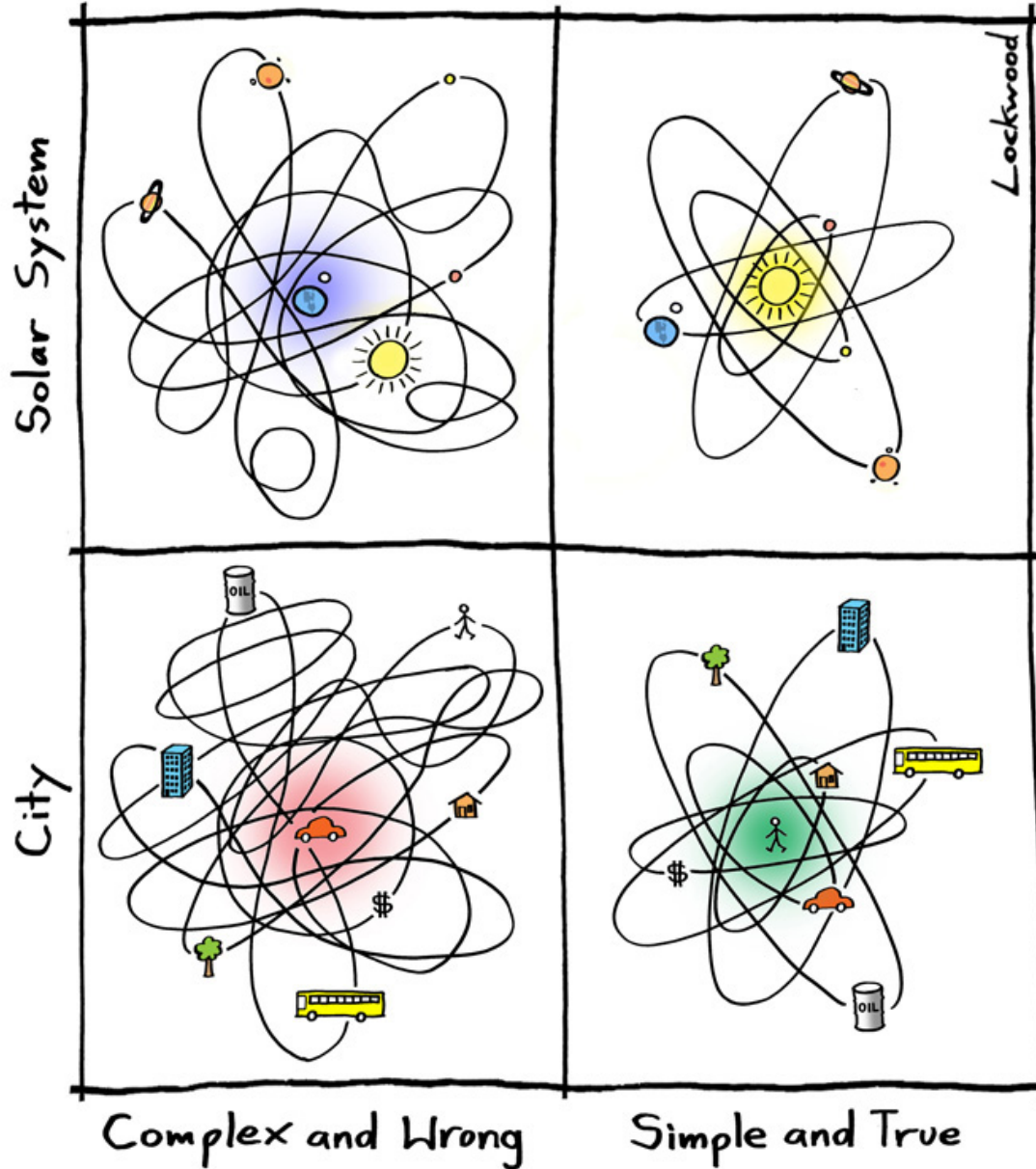
AASHTO guides

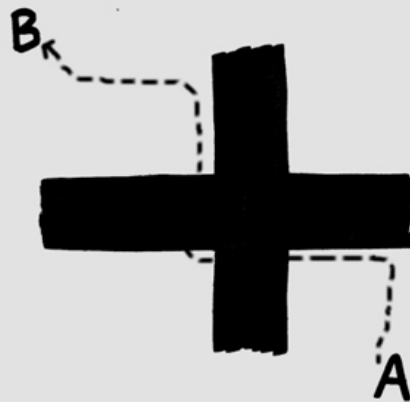
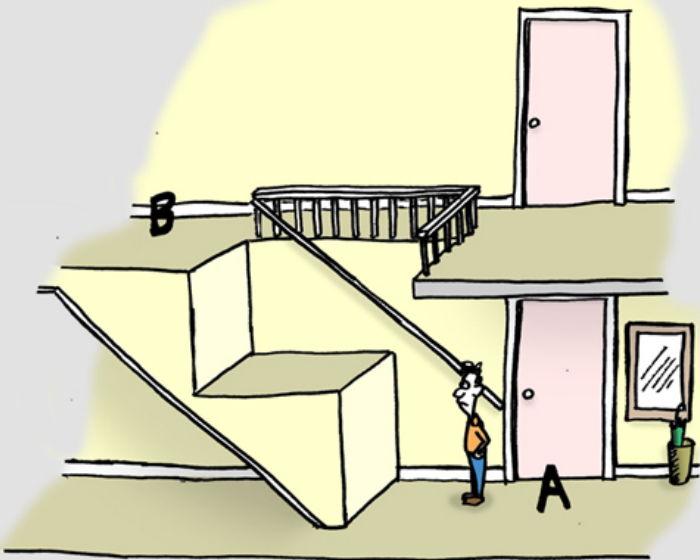
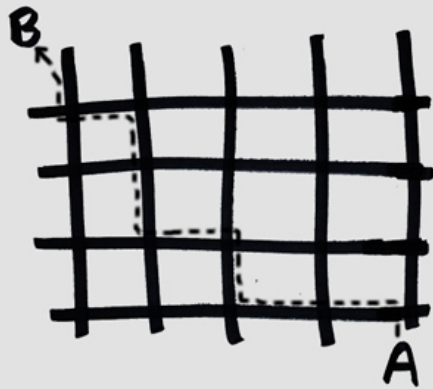
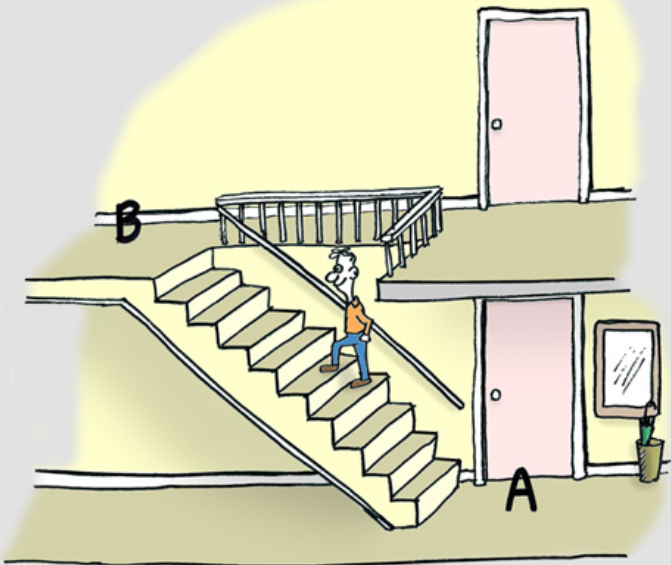
Manual on Uniform Traffic Control Devices (MUTCD)

APBP monthly webinar program and archives

APBP chapters (13 so far and growing!)

Getting the Model's Central Assumption
Correct Makes a Difference

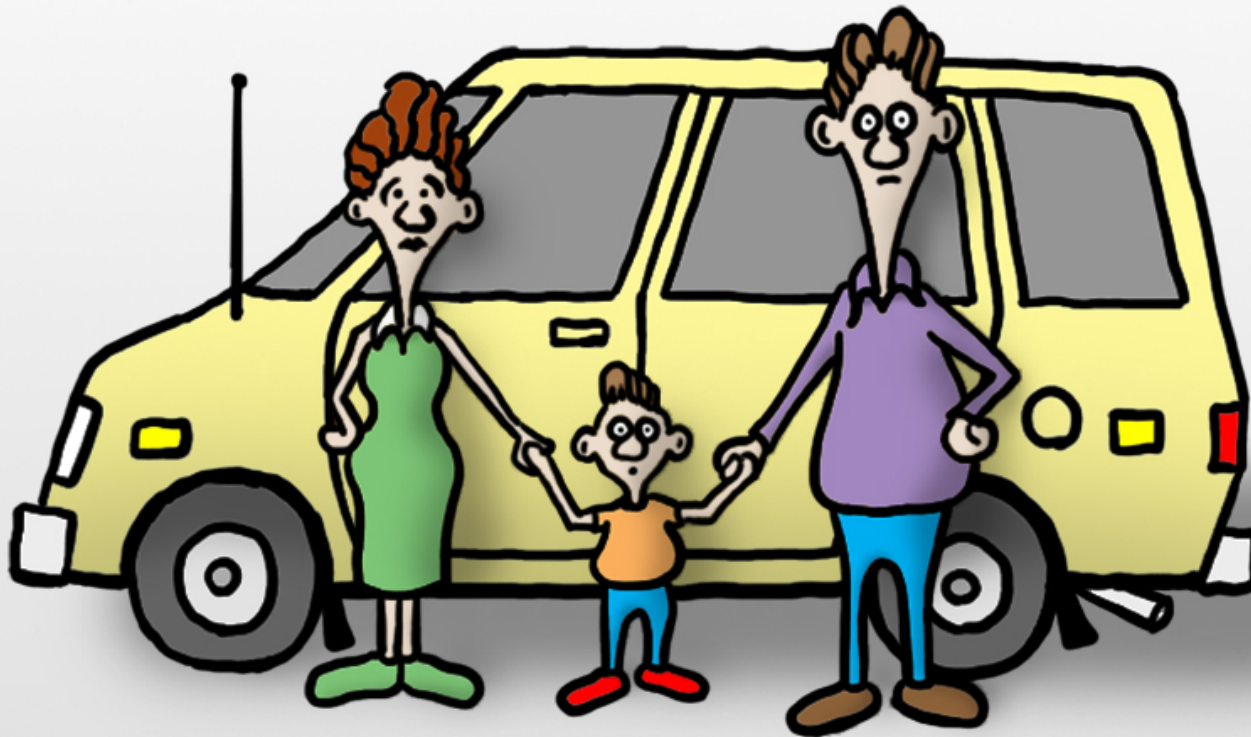




d

Lockwood

THERE IS TOO MUCH TRAFFIC
FOR BILLY TO WALK TO SCHOOL ;
SO WE DRIVE HIM.



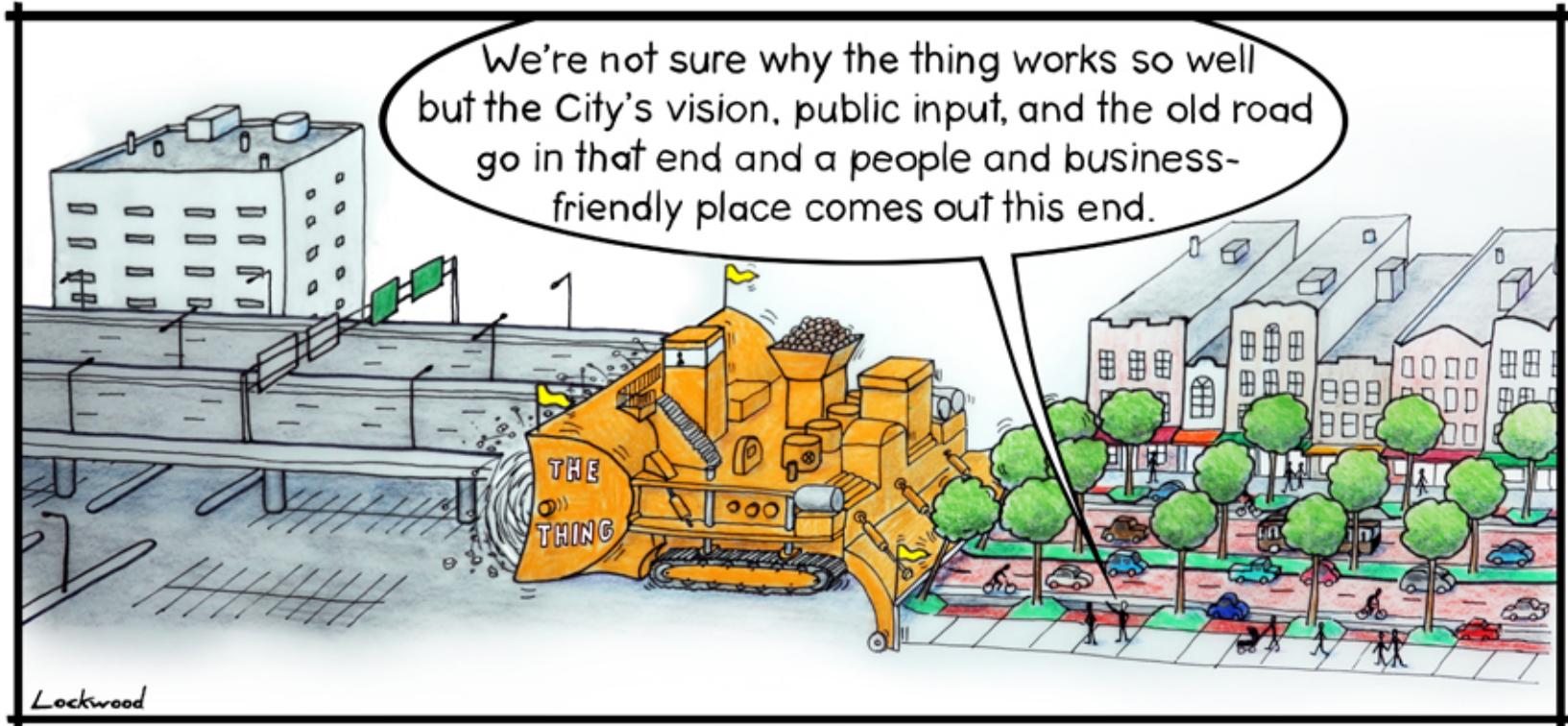
Lockwood

Traffic Inducing Traffic

This symbolizes
“Sharrow”, the ancient Egyptian
Goddess of Efficiency. She encouraged the
Powerful to willingly share the earth for their
own health and that of society.



“Sharing” an idea that never gets old



The Thing Is ...

Cartoons by Ian Lockwood are reprinted with permission.